



TO STUDY THE STATUS OF MODEL VERB IN ENGLISH OF 9TH STANDARD IN STATE LEVEL SCHOOL

Author's Name: Dr. Tenzin Choezin¹

Affiliation:

1. Assistant Professor, Vijaya Teachers College, Bengaluru, Karnataka, India.

Corresponding Author Name and Email ID: Dr. Tenzin Choezin,
tenzin951@gmail.com

ABSTRACT

The students of 9th standard "A" section, from Yogeshwaranada Higher Secondary School, who were 48 in number, were to perform/ using Modal Verb in writing and speaking in English language. Because of which the action research has been conducted. This study was conducted in the Subject at "English Language". The Study intends to cater the difficulty faced by the students in the respective topic of Modal verbs.

Keywords: Model Verbs, Yogeshwaranada, guidance.

INTRODUCTION

Research is a systematic investigation, exploration and analysis of a particular subject or topic in order to discover new information validity or existing knowledge or solved specific problems it involves a structure and methodological approach to gathering and interpreting data open employing various methodology and techniques tailored to research questions at hand. Research aims to deepen understanding information, generate insights and conducted in academics, scientific or practical contexts, research plays a crucial role in deriving innovation.

Action research is a systematic approach to solving practical problems and improving practices through cycles of planning action abstracting and reflection.

NEED FOR THE STUDY

- Action research is essential to improve and to modernise the traditional system at the school.
- For creating the democratic value among the people and the Teachers.
- For filling the gap between pupil and the society and to improve the mutual relationship.
- For studying and finding the solutions to the adjustment problems of the pupil in the schools.
- Action research is must for developing self confidence among the school teachers this will also make them aware of methods to overcome their errors and weaknesses.

IDENTIFYING THE PROBLEM

When I was teaching English, I observed that the students of 8th standard B section were facing the problem in performing the use of modal verbs while speaking and writing in the subject of English.

- The students were facing problem to use modal verb while speaking.
- The student we are facing problem to use appropriate modal verb while writing on their notebook.
- The students were facing problem to make differentiation between can and could.
- The students will be filling difficulties while using may and might in sentence.
- The students were finding difficulties to find out the modal verb from a sentence.

PINPOINTING THE PROBLEM

The students of VIII standard “B” Section, Yogeshwaranada High School, Ulsoor Road, Bangalore were unable to use Modal verb while speaking and writing English Language.

ANALYSING THE PROBABLE CAUSES

The following were the probable causes of the present study:

- There was lack of practice in problem related to speaking in English it was observed that the students were unable to speak about the future.
- There was difficulty in use of can and could in appropriate place students were finding difficulty in understanding the appropriate use of May and might.
- Students were finding difficulty in understanding the appropriate use of will and would.
- Student who has not getting enough resources like library textbook and workbook to get more knowledge about model verbs and their uses.
- Student were not getting proper guidance from their English teacher.
- Students were feeling on comfortable to speak English in front of teacher student were getting confused how to use the past form of modal verb in a sentence.

LISTING THE OBJECTIVES OF THE STUDY

- The following were the probable causes of the present study:
- There was lack of practice in problem related to speaking in English it was observed that the students were unable to speak about the future.
- There was difficulty in use of can and could in appropriate place.
- The students were finding difficulty in understanding the appropriate use of May and might.
- Students were finding difficulty in understanding the appropriate use of will and would.
- Student who has not getting enough resources like library textbook and workbook to get more knowledge about model verbs and their uses.
- Student were not getting proper guidance from their English teacher.
- Students were feeling on comfortable to speak English in front of teacher student were getting confused how to use the past form of modal verb in a sentence.

FORMULATING ACTION HYPOTHESIS

The following were the action hypotheses of the study:

- If the teacher provides incorporate interactive activities to engage the students in speaking exercises such as role play debates and discussion that require the use of modal verb in authentic context then the students will be able to gain more knowledge about model verb and will be able to gain different types of verbs in English language.
- If the teacher teacher's day model examples of work clear and diverse example of model verb usage in sentence paragraph then the student will be able to find out the model verb in a sentence easily.
- If the teacher provides scaffolded practice and start with guided practice activities then the student receives structure support in using model verbs and it will be increasing the level of a complexity as they gain confidence.
- If the teacher offers feedback on students' performance, then the students motivation level will be increased.
- If the teacher integrates it to the curriculum, then the students will get more opportunities to practice model verbs.

DESIGN THE ACTION PLAN

The study will be undertaken in three sessions with the implementation of a p pretest and a post test.

- Sample: 11 students of IX standard.
- Tools used: Diagnostic Test
- Procedure: a pretest is conducted at the beginning of the study to gain the knowledge about the prerequisite of the students of IX standard. Based on the scores obtained the remedial classes will be conducted on the ocean in the remedial classes various teaching learning material will be used after the remedial session a post test will be conducted and the corresponding sports or obtained.

Session:1	Date: 16th Jan 2024	Topic: Meaning of verbs in English Language
Session:2	Date: 17th Jan 2024	Topic: Different types of modal verbs use in English Language.
Session:3	Date: 18th Jan 2024	Topic: use of different types of modal verbs in English Language.

IMPLEMENTATION OF THE ACTION PLAN

The action research was conducted as per the design of the action plan at the beginning that is on 15th January 2024 the Pretest was conducted to the students of IX standard Yogeshwar and the school the test paper were evaluated and the course where recorded students were provided with motivation to get them prepared for the remedial classes.

- The first remedial session was conducted on 16th January 2024 the topic covered were the different types of parts of speech in the English language meaning of verbs and different types of birds in the English language.
- The second remedial session was conducted on 17th January 2024 the topic covered where the meaning of modal verbs and the different types of model verbs in English language.
- The third remedial session was conducted on 18th January 2024 the topic covered where the use of different types of model verb in sentence mostly can code will would may might must out to et cetera in the sensation students gave a real-life example and find out the model verbs from different examples.

Finally, the post test was conducted on 19th January 2024 the paper were evaluated and the scores where is recorded.

STATISTICAL ANALYSIS AND INTERPRETION

Calculation of mean:

List of marks in pretest and post-test:

Total Marks: 25

Sl. No	Name of the students	Pre-test	Post-test
1	Jeevitha K.	09	20
2	Jeetin Rajan I.	14	23
3	Vishal J.	10	21
4	Anand P.	08	21
5	Kaushika M.	13	24
6	Sonia R.	10	23
7	Bindu BR.	13	24
8	Ritish Ray A.	06	18
9	R. Suresh	14	23
10	Lalith T.	09	20
11	Darshan S.	14	22

To convert the row scores to frequency distribution Table

Range= highest score-lowest score

(Pre-test) $14-06 = 08$

Range= Highest Score-Lowest Score

(Post-test) $24-18=06$

Class Interval = $\text{Range}/06 = 1.33 = 2$

Preparation of the frequency distribution table:

Pre-test

C.I.	Tallies	Frequency	Mid-point	fx
14-15	III	3	14.5	43.5
12-13	II	2	12.5	25
10-11	II	2	10.5	21
08-09	III	3	08.5	25.5
06-07	I	1	06.5	6.5

N= 11

$\sum fx = 121.5$

Mean $x = \sum fx / N = 121.5 / 11 = 11.04 (x)$

Post-test

C.I.	Tallies	Frequency (f)	Mid-point (x)	fx
24-25	III	02	24.5	49
22-23	III	04	22.5	90
20-21	III	04	20.5	90
18-19	I	01	18.5	18.5

N=11

$\sum fx = 247.5$

Mean $x = \sum fx / N = 247.5 / 11 = 22.5 (x)$

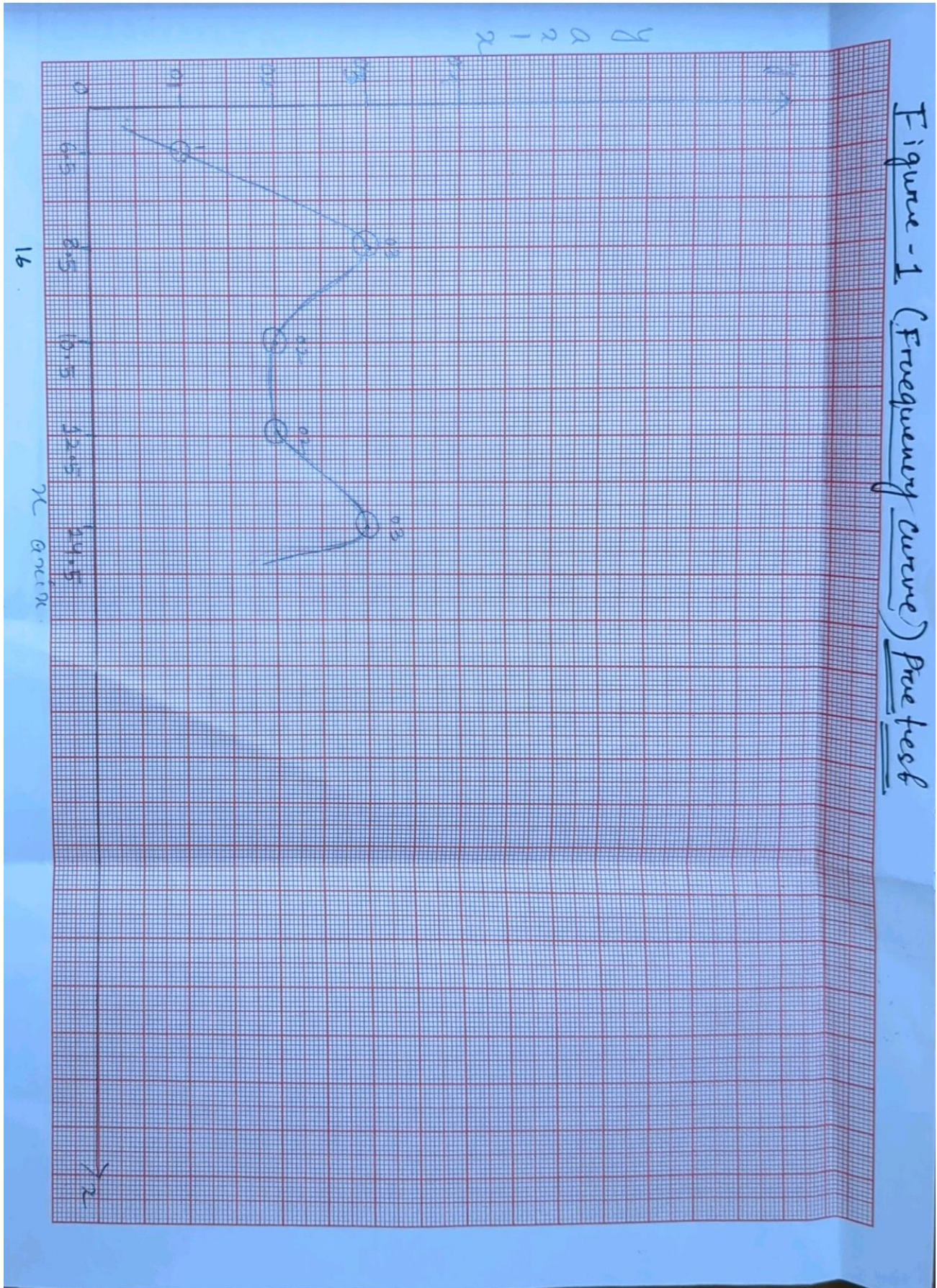
Interpretation based an Mean of Pretest and Post-test

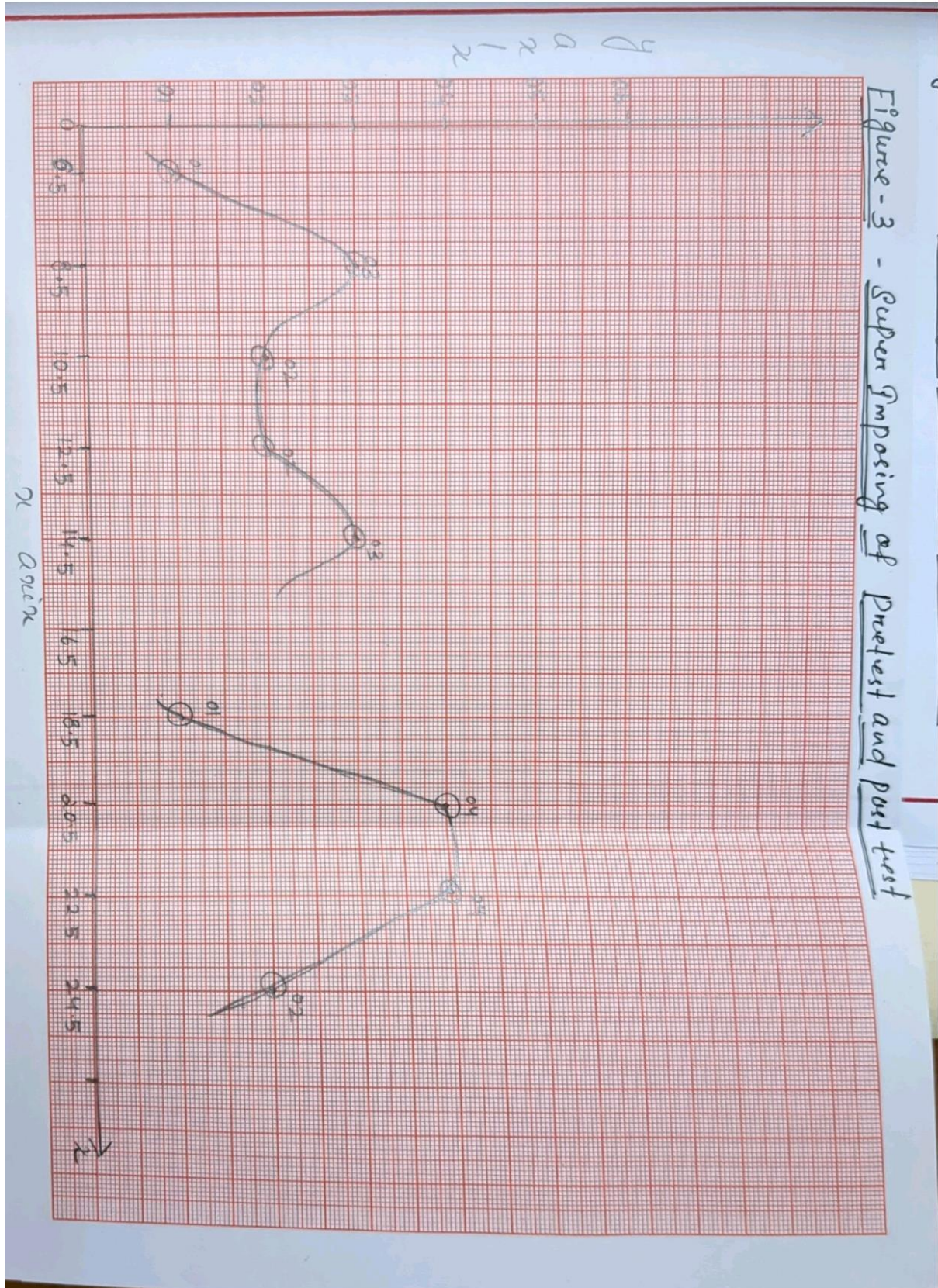
Mean Pre-test	Mean Post-test
11.04	22.5

Pretest x < Post test x

11.04 < 22.5

Hence the remedial class taken by the teacher is successful. Therefore, all the hypothesis are acceptable.





INTERPRETATION BASED ON GRAPHICAL ANALYSIS

From the observation of above graph, it is found that the frequency curve at pretest is towards y axis where is the frequency curve at the post test is away from y axis the pretest score or concentrated on left hand side where is past test score are concentrated on right hand side away from the y-axis.

Hence all the action hypotheses are accepted and we can conclude that the remedial program that was taken by the investigator was successful in enhancing the level of students in the program area.

CONCLUSION

The action research is found to be very useful in the field of school education the study is evident to say that exam research is beneficial the study is not only help in scattering the specific problems faced by the students of 9th standard on use of a model verb but also gave an idea and served as a reference to plan for future uses as a classroom teacher it is our responsibility to determine such problems in the classes.

If any and plan for the remediation this study gives an idea about the essential prerequisite to be included by the students to study new concept shows to be effective.

The particular study has been successful in catering the difficulties faced by the students in a particular area. The study also paved the way to utilise the techniques studies during the remedial sessions in other areas also the problem such as using the different verbs representing the different types of modal verb performing the English language perfectly and confidently it will help for future perspective.

LIMITATIONS OF THE STUDY

The study is confined to the 9th standard students at Yogeshwaranada High school, Ulsoor road Bangalore of batch 2023-2024 we study was completed in the year 2024 researcher is responsible for the study and cannot be considered in general none of the faculty members or department people of Vijay teachers College Jayanagar and involved in this study.

REFERENCE

Website:

1. <http://en.wikipedia.org/wiki/Action-mesearch>.
2. http://www.neem.org/uploadretiker/Greauls_andAwards/greants/How.pdf.
3. [http://ivypanda.com/reseays/ the importance of action ruescarech](http://ivypanda.com/reseays/the importance of action ruescarech).
4. [http:// mandiela.ac.za/ Aims of action Rostar](http://mandiela.ac.za/Aims of action Rostar).
5. [http:// Byju. India.ac.in/ Madal werbe.in](http://Byju.India.ac.in/Madal werbe.in). 6. [http://igno. Govt.in/English languague Book](http://igno.Govt.in/English languague Book).
7. [http:// Akash.in/english language](http://Akash.in/english language).
8. <http://shudhaganga.Govt/Language Reesearch>.
9. [http:// Book af Research.com/meaning](http://Book af Research.com/meaning).

Books and Journals:

1. Research methodology, C.R. Kothari, 2005.
2. Research methodology, Saurav Gang, 2001.
3. Research derigor, john w.correswell, 2009. 4. Research methods. in English, MP sinha
5. Action Research in reduction, Dre sp. Gupta.
6. Action Research, Dr. Sanguereta Nath 2011 7. Internation Journal of Action Research.
8. Action research Journal in English language
9. NCERT English language Book of 9th standard.